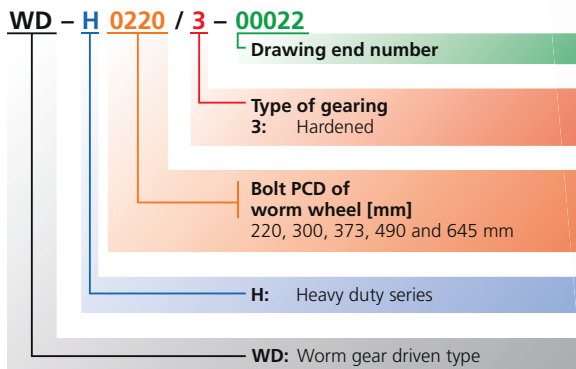


WD-H series

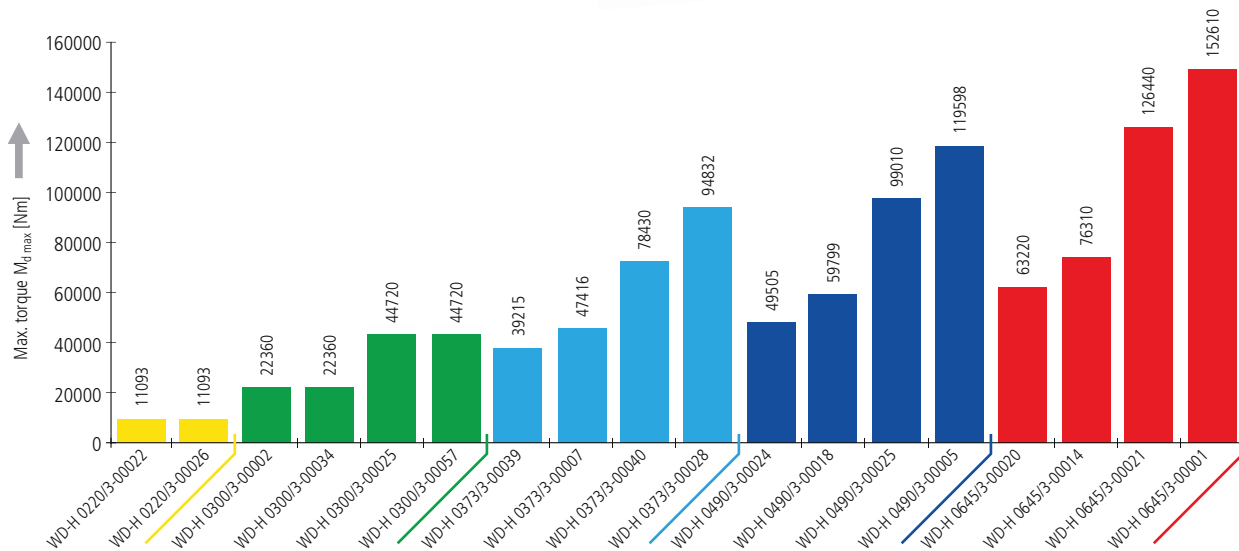
WD-H series overview



Maximum torque $M_{d\ max}$ of the individual sizes

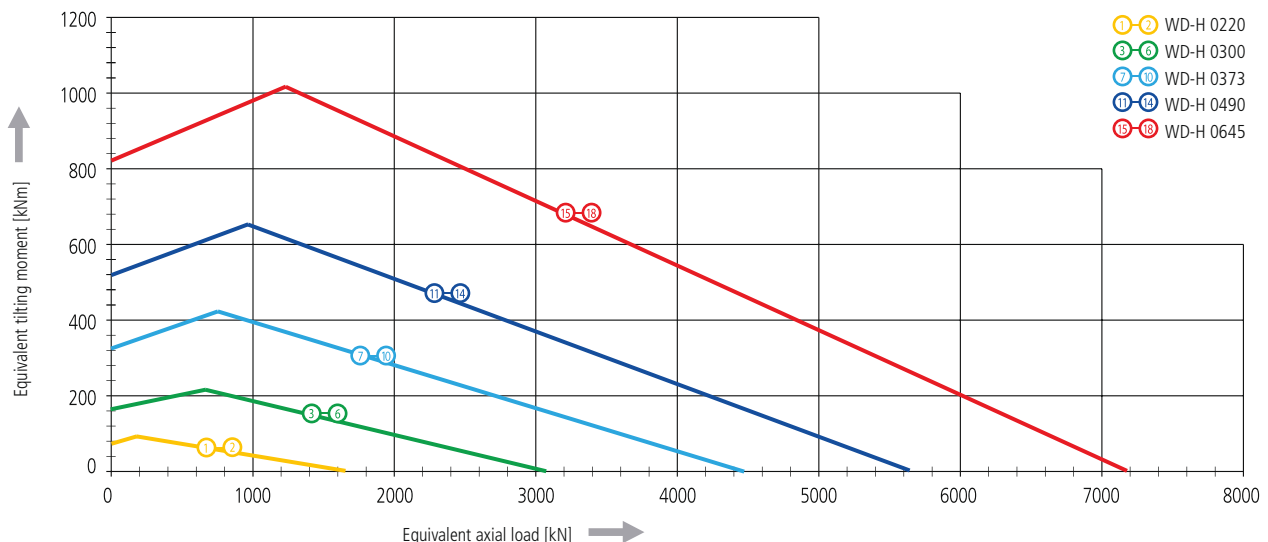
CAUTION: The duty per minute is limited.

Please always observe the explanations in the Technical Information section (from page 60).

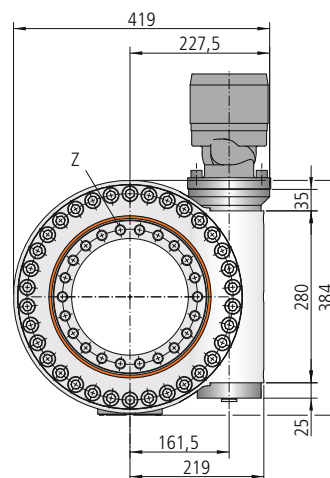
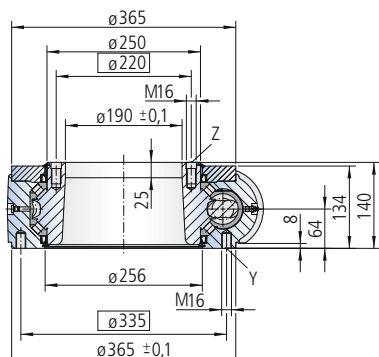


Limiting load diagrams of the individual sizes for compressive loads

Please always observe the explanations in the Technical Information section (from page 60).



Size WD-H 0220 / 1 drive



Mounting holes

Y = 24 drill holes M16-24 deep, evenly distributed

Z = 22 drill holes $\varnothing 17-10$ deep / M16-25 deep, evenly distributed

Lubricating ports

1 conical grease nipple on housing exterior

Slew drive supplied pre-lubricated

Drawing number WD-H 0220/3-00022

Drawing number WD-H 0220/3-00026

Module	m	[mm]	5	5
Number of threads of the worm		[-]	1	2
Gear ratio	i	[-]	56	28
Self-locking gears			No**	No**
Max. torque $s_f = 1$	$M_{d \max}$	[Nm]	11093	11093
Nom. torque $s_W = 1$ at $n = 3 \text{ min}^{-1}$	$M_{d \text{ nom}}$	[Nm]	4800	5150
Max. holding torque* $s_{FS} = 1$ (static)	$M_{h \max}$	[Nm]	11093	11093
Static load rating, radial	$C_{o \text{ rad}}$	[kN]	616	616
Static load rating, axial	$C_{o \text{ ax}}$	[kN]	1650	1650
Dynamic load rating, radial	C_{rad}	[kN]	193	193
Dynamic load rating, axial	C_{ax}	[kN]	224	224
Weight, incl. 11 kg for hydraulic motor RE200		[kg]	89	89

* Optionally with brake

** See: Technical Information, section *Self-locking*

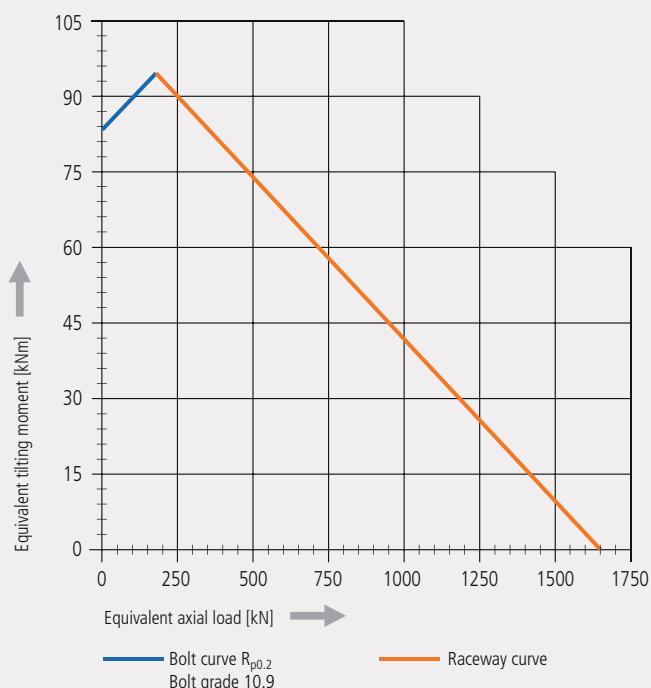
The hydraulic/electric motor is selected according to the actual requirements and customer specification.

Selection example:

Performance data with hydraulic motor RE200

Pressure differential	Δp	[bar]	145	230
Oil flow	Q	[l/min]	38	22
Output speed	n	[min ⁻¹]	3	3
Max. achievable torque	M_d	[Nm]	11093	11093

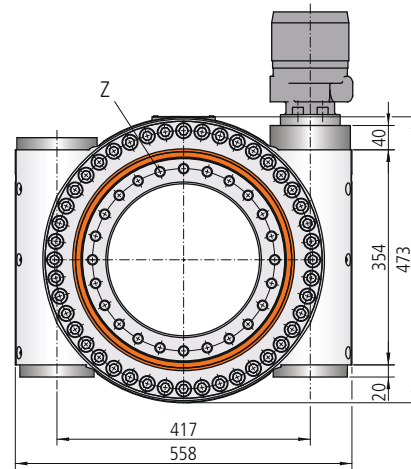
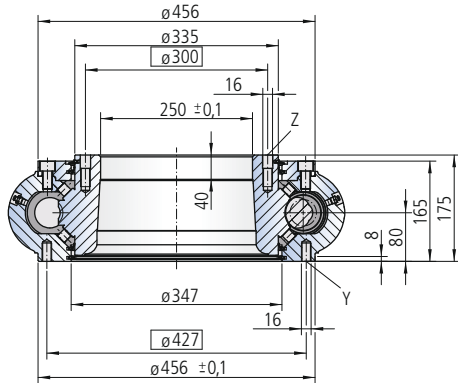
Limiting load diagram for compressive loads



Please always observe the technical information!

WD-H series

Size WD-H 0300 / 1 drive



Mounting holes

Y = 24 drill holes M16-30 deep, evenly distributed

Z = 24 drill holes \varnothing 17-22 deep / M16-30 deep, evenly distributed

Lubricating ports

1 conical grease nipple on housing exterior, right side

3 conical grease nipples on housing exterior, left side

Slew drive supplied pre-lubricated

Drawing number WD-H 0300/3-00034				
Drawing number WD-H 0300/3-00002				
Module	m	[mm]	6	6
Number of threads of the worm		[-]	1	2
Gear ratio	i	[-]	61	30.5
Self-locking gears			No**	No**
Max. torque $s_T = 1$	M_{d max}	[Nm]	22360	22360
Nom. torque $S_W = 1$ at $n = 3 \text{ min}^{-1}$	M_{d nom}	[Nm]	12600	14000
Max. holding torque* $S_{FS} = 1$ (static)	M_{h max}	[Nm]	22360	22360
Static load rating, radial	C_{o rad}	[kN]	1506	1506
Static load rating, axial	C_{o ax}	[kN]	3074	3074
Dynamic load rating, radial	C_{rad}	[kN]	316	316
Dynamic load rating, axial	C_{ax}	[kN]	445	445
Weight, incl. 13 kg for hydraulic motor RE470		[kg]	167	167

* Optionally with brake

** See: Technical Information, section *Self-locking*

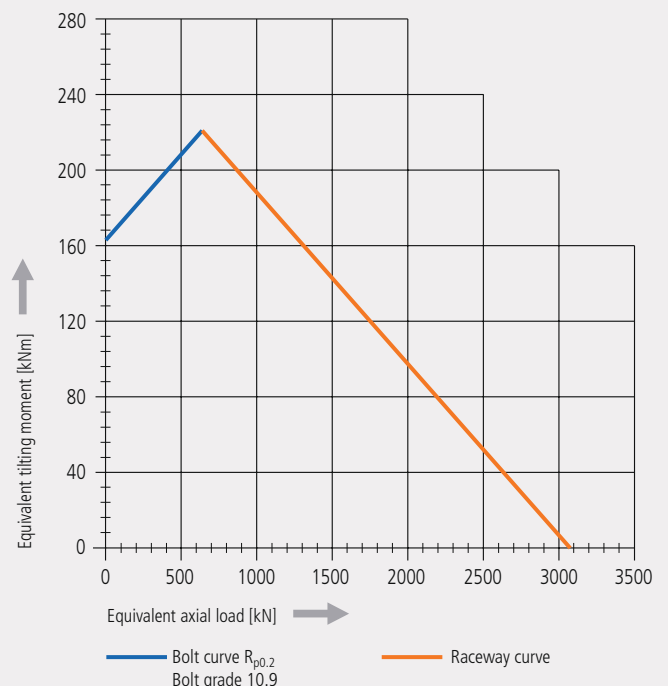
The hydraulic/electric motor is selected according to the actual requirements and customer specification.

Selection example:

Performance data with hydraulic motor RE470

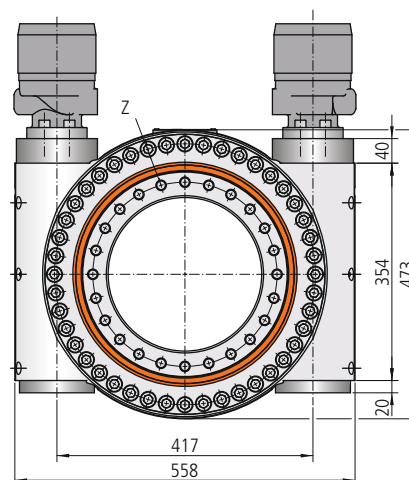
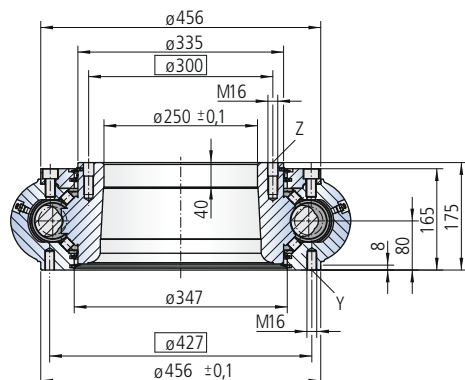
Pressure differential	Δp	[bar]	125	180
Oil flow	Q	[l/min]	61	38
Output speed	n	[min ⁻¹]	2	2
Max. achievable torque	M_d	[Nm]	22360	22360

Limiting load diagram for compressive loads



Please always observe the technical information!

Size WD-H 0300 / 2 drives



Mounting holes

Y = 24 drill holes M16-30 deep, evenly distributed

Z = 24 drill holes $\varnothing 17-22$ deep / M16-30 deep, evenly distributed

Lubricating ports

1 conical grease nipple on both left and right side of housing exterior

Slew drive supplied pre-lubricated

Drawing number WD-H 0300/3-00057

Drawing number WD-H 0300/3-00025

Module	m	[mm]	6	6
Number of threads of the worm		[-]	1	2
Gear ratio	i	[-]	61	30.5
Self-locking gears			No**	No**
Max. torque $s_f = 1$	M_{d max}	[Nm]	44720	44720
Nom. torque $s_W = 1$ at $n = 2 \text{ min}^{-1}$	M_{d nom}	[Nm]	25200	28000
Max. holding torque* $s_{FS} = 1$ (static)	M_{h max}	[Nm]	44720	44720
Static load rating, radial	C_{o rad}	[kN]	1506	1506
Static load rating, axial	C_{o ax}	[kN]	3074	3074
Dynamic load rating, radial	C_{rad}	[kN]	316	316
Dynamic load rating, axial	C_{ax}	[kN]	445	445
Weight, incl. 26 kg for 2 hydraulic motors RE470		[kg]	186	186

* Optionally with brake

** See: Technical Information, section *Self-locking*

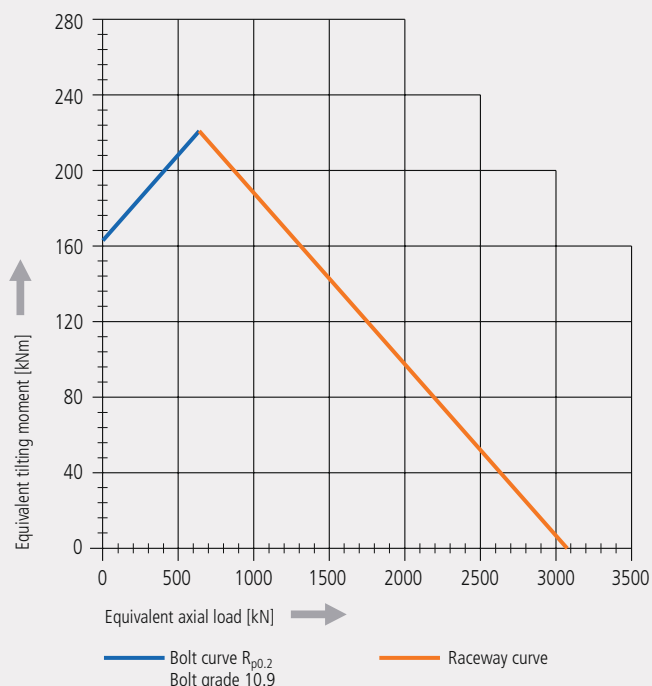
The hydraulic/electric motor is selected according to the actual requirements and customer specification.

Selection example:

Performance data with two hydraulic motors RE470

Pressure differential	Δp	[bar]	125	180
Oil flow	Q	[l/min]	122	76
Output speed	n	[min ⁻¹]	2	2
Max. achievable torque	M_d	[Nm]	44720	44720

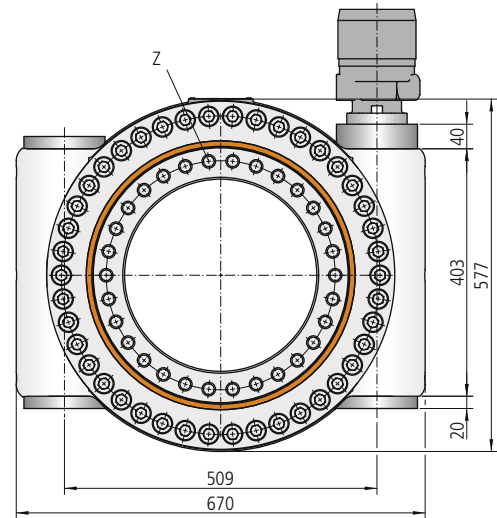
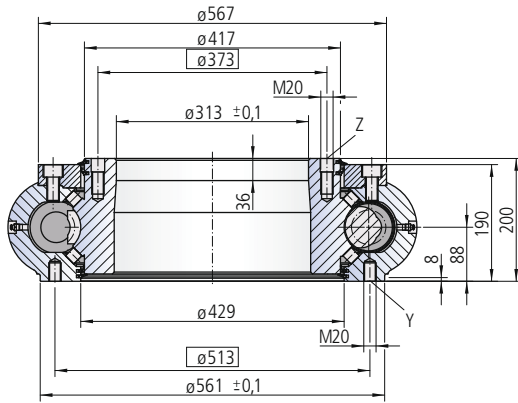
Limiting load diagram for compressive loads



Please always observe the technical information!

WD-H series

Size WD-H 0373 / 1 drive



Mounting holes

Y = 32 drill holes M20-30 deep, evenly distributed

Z = 30 drill holes $\varnothing 22$ -22 deep / M20-36 deep, evenly distributed

Lubricating ports

1 conical grease nipple on housing exterior, right side

3 conical grease nipples on housing exterior, left side

Slew drive supplied pre-lubricated

Drawing number WD-H 0373/3-00007

Drawing number WD-H 0373/3-00039

Module	m	[mm]	7	8
Number of threads of the worm		[-]	2	1
Gear ratio	i	[-]	31.5	56
Self-locking gears			No**	No**
Max. torque $s_f = 1$	M_{d max}	[Nm]	39215	47416
Nom. torque $s_w = 1$ at $n = 2 \text{ min}^{-1}$	M_{d nom}	[Nm]	36000	35500
Max. holding torque* $s_{f5} = 1$ (static)	M_{h max}	[Nm]	39215	47416
Static load rating, radial	C_{o rad}	[kN]	2185	2185
Static load rating, axial	C_{o ax}	[kN]	4458	4458
Dynamic load rating, radial	C_{rad}	[kN]	442	442
Dynamic load rating, axial	C_{ax}	[kN]	622	622
Weight, incl. 25 kg for hydraulic motor DT930		[kg]	285	285

* Optionally with brake

** See: Technical Information, section *Self-locking*

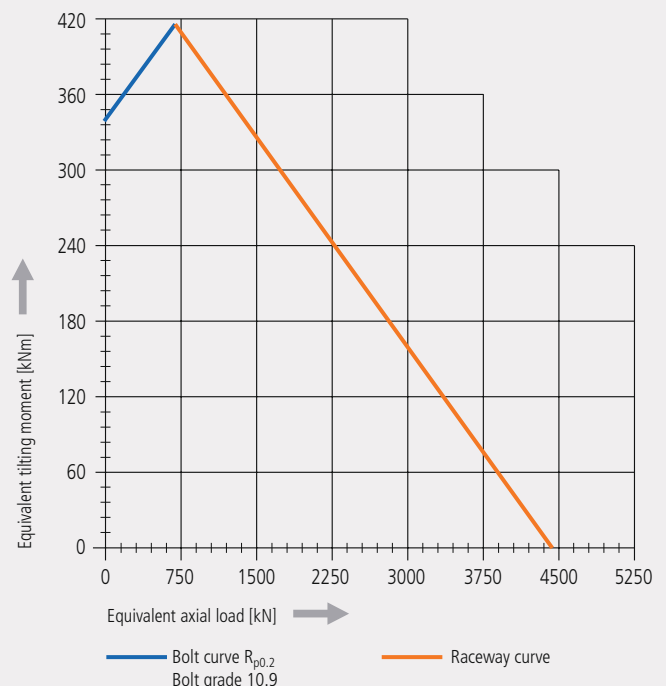
The hydraulic/electric motor is selected according to the actual requirements and customer specification.

Selection example:

Performance data with hydraulic motor DT930

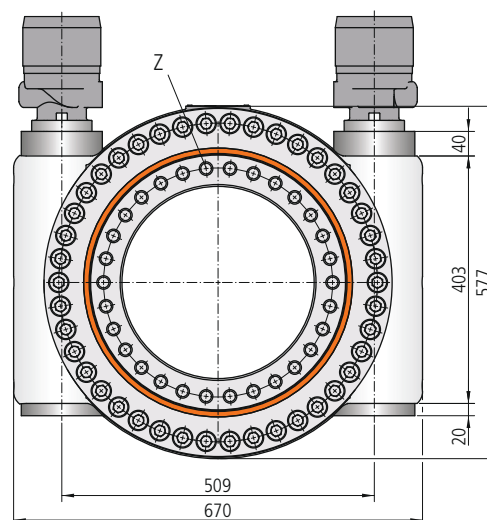
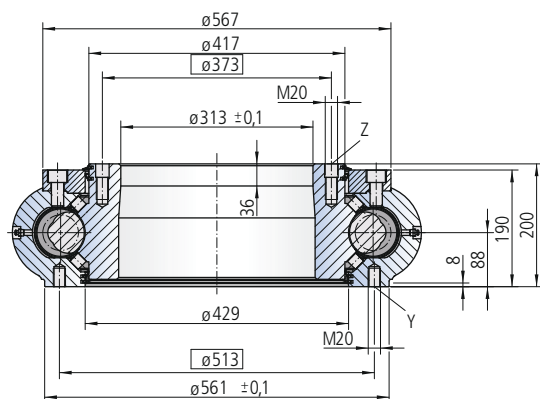
Pressure differential	Δp	[bar]	165	160
Oil flow	Q	[l/min]	76	114
Output speed	n	[min ⁻¹]	2	2
Max. achievable torque	M_d	[Nm]	39215	47416

Limiting load diagram for compressive loads



Please always observe the technical information!

Size WD-H 0373 / 2 drives



Mounting holes

Y = 32 drill holes M20-30 deep, evenly distributed

Z = 30 drill holes $\varnothing 22-22$ deep / M20-36 deep, evenly distributed

Lubricating ports

1 conical grease nipple on both left and right side of housing exterior

Slew drive supplied pre-lubricated

Drawing number WD-H 0373/3-00028

Drawing number WD-H 0373/3-00040

Module	m	[mm]	7	8
Number of threads of the worm		[-]	2	1
Gear ratio	i	[-]	31.5	56
Self-locking gears			No**	No**
Max. torque $s_T = 1$	M_{d max}	[Nm]	78430	94832
Nom. torque $S_W = 1$ at $n = 2 \text{ min}^{-1}$	M_{d nom}	[Nm]	72000	71000
Max. holding torque* $S_{FS} = 1$ (static)	M_{h max}	[Nm]	78430	94832
Static load rating, radial	C_{o rad}	[kN]	2185	2185
Static load rating, axial	C_{o ax}	[kN]	4458	4458
Dynamic load rating, radial	C_{rad}	[kN]	442	442
Dynamic load rating, axial	C_{ax}	[kN]	622	622
Weight, incl. 50 kg for 2 hydraulic motors DT930		[kg]	330	330

* Optionally with brake

** See: Technical Information, section *Self-locking*

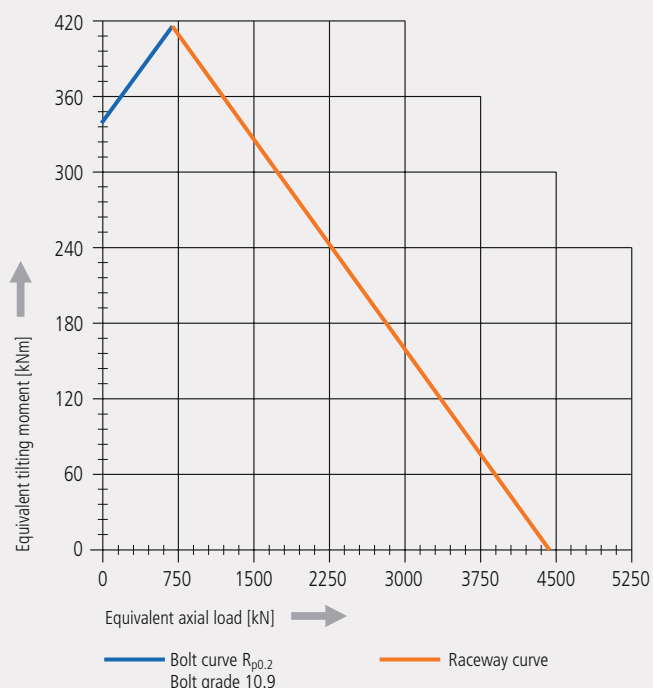
The hydraulic/electric motor is selected according to the actual requirements and customer specification.

Selection example:

Performance data with two hydraulic motors DT930

Pressure differential	Δp	[bar]	165	160
Oil flow	Q	[l/min]	152	228
Output speed	n	[min ⁻¹]	2	2
Max. achievable torque	M_d	[Nm]	78430	94832

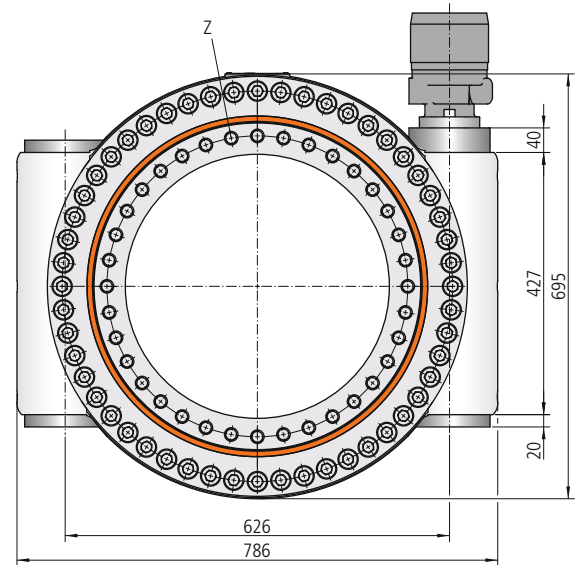
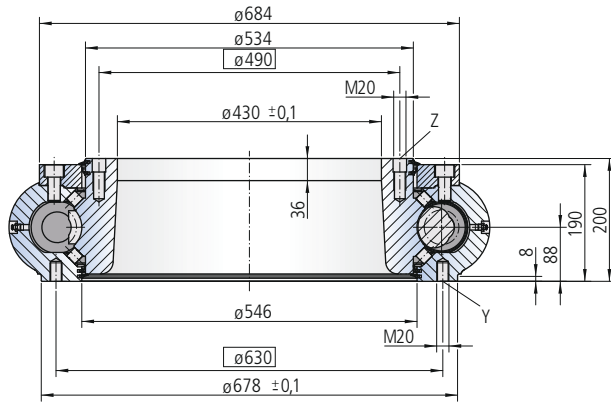
Limiting load diagram for compressive loads



Please always observe the technical information!

WD-H series

Size WD-H 0490 / 1 drive



Mounting holes

Y = 36 drill holes M20-30 deep, evenly distributed

Z = 36 drill holes ø22-22 deep / M20-36 deep, evenly distributed

Lubricating ports

1 conical grease nipple on housing exterior, right side

3 conical grease nipples on housing exterior, left side

Slew drive supplied pre-lubricated

Drawing number WD-H 0490/3-00018

Drawing number WD-H 0490/3-00024

Module	m	[mm]	7	8
Number of threads of the worm		[-]	2	1
Gear ratio	i	[-]	40	70
Self-locking gears			No**	No**
Max. torque $S_T = 1$	M_{d max}	[Nm]	49505	59799
Nom. torque $S_W = 1$ at $n = 1 \text{ min}^{-1}$	M_{d nom}	[Nm]	49505	59799
Max. holding torque* $S_{FS} = 1$ (static)	M_{h max}	[Nm]	49505	59799
Static load rating, radial	C_{o rad}	[kN]	2775	2775
Static load rating, axial	C_{o ax}	[kN]	5662	5662
Dynamic load rating, radial	C_{rad}	[kN]	502	502
Dynamic load rating, axial	C_{ax}	[kN]	707	707
Weight, incl. 25 kg for hydraulic motor DT930		[kg]	347	347

* Optionally with brake

** See: Technical Information, section *Self-locking*

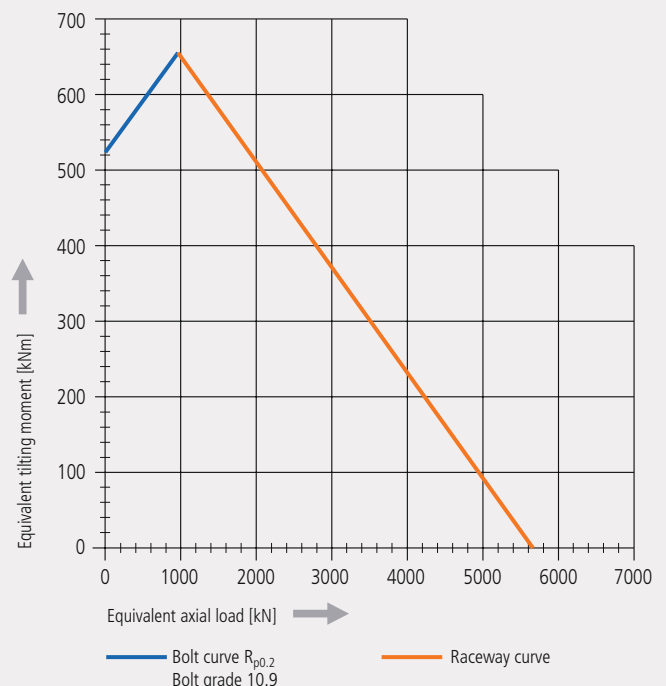
The hydraulic/electric motor is selected according to the actual requirements and customer specification.

Selection example:

Performance data with hydraulic motor DT930

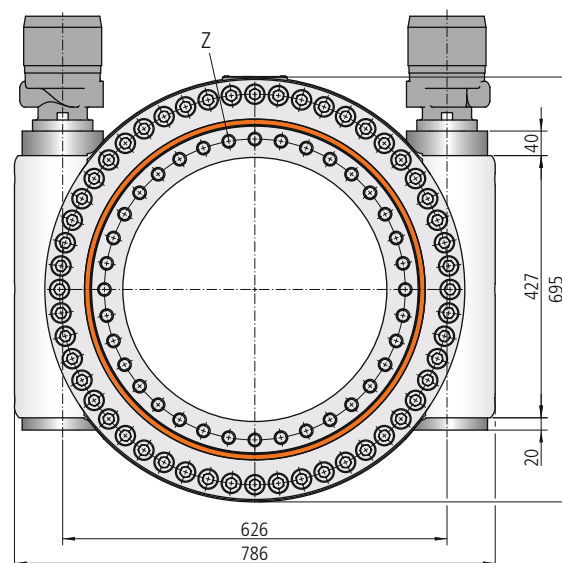
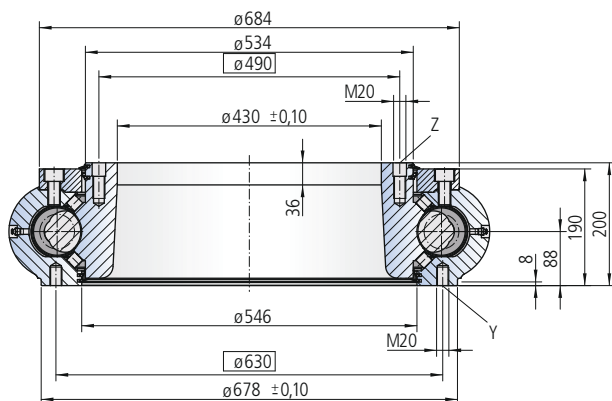
Pressure differential	Δp	[bar]	155	145
Oil flow	Q	[l/min]	50	74
Output speed	n	[min ⁻¹]	1	1
Max. achievable torque	M_d	[Nm]	49505	59799

Limiting load diagram for compressive loads



Please always observe the technical information!

Size WD-H 0490 / 2 drives



Mounting holes

Y = 36 drill holes M20-30 deep, evenly distributed

Z = 36 drill holes ø22-22 deep / M20-36 deep, evenly distributed

Lubricating ports

1 conical grease nipple on both left and right side of housing exterior

Slew drive supplied pre-lubricated

Drawing number WD-H 0490/3-00005

Drawing number WD-H 0490/3-00025

Module	m	[mm]	7	8
Number of threads of the worm		[-]	2	1
Gear ratio	i	[-]	40	70
Self-locking gears			No**	No**
Max. torque $s_T = 1$	$M_{d \max}$	[Nm]	99010	119598
Nom. torque $s_W = 1$ at $n = 1 \text{ min}^{-1}$	$M_{d \text{ nom}}$	[Nm]	99010	119598
Max. holding torque* $s_{FS} = 1$ (static)	$M_{h \max}$	[Nm]	99010	119598
Static load rating, radial	$C_{o \text{ rad}}$	[kN]	2775	2775
Static load rating, axial	$C_{o \text{ ax}}$	[kN]	5662	5662
Dynamic load rating, radial	C_{rad}	[kN]	502	502
Dynamic load rating, axial	C_{ax}	[kN]	707	707
Weight, incl. 50 kg for 2 hydraulic motors DT930		[kg]	394	394

* Optionally with brake

** See: Technical Information, section *Self-locking*

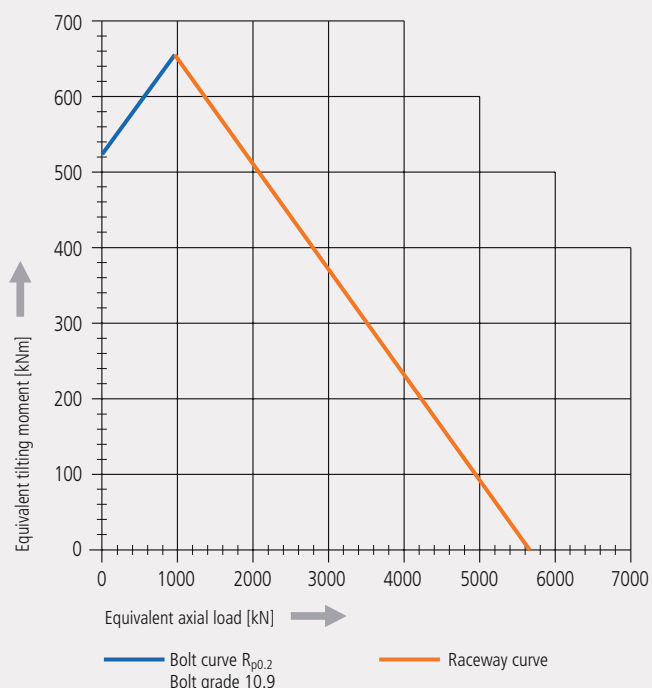
The hydraulic/electric motor is selected according to the actual requirements and customer specification.

Selection example:

Performance data with two hydraulic motors DT930

Pressure differential	Δp	[bar]	155	145
Oil flow	Q	[l/min]	100	148
Output speed	n	[min ⁻¹]	1	1
Max. achievable torque	M_d	[Nm]	99010	119598

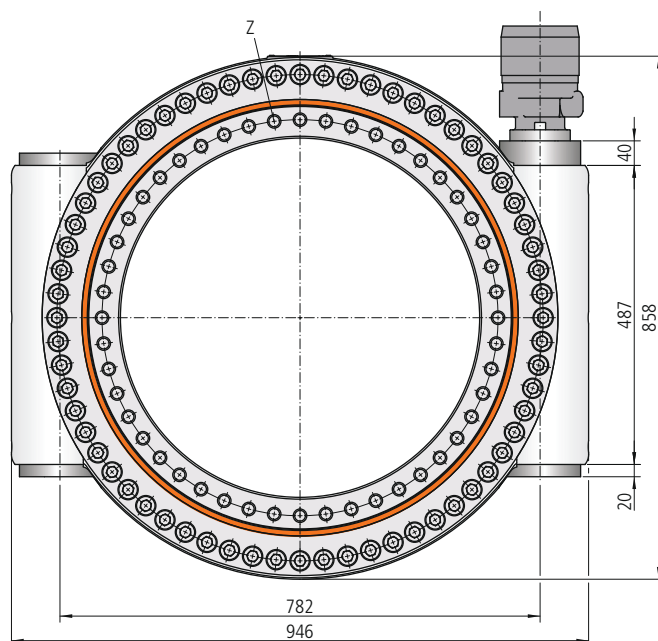
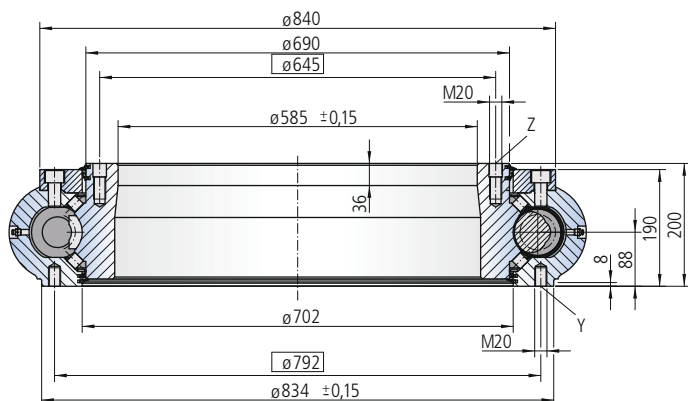
Limiting load diagram for compressive loads



Please always observe the technical information!

WD-H series

Size WD-H 0645 / 1 drive



Mounting holes

Y = 48 drill holes M20-30 deep, evenly distributed

Z = 48 drill holes ø22-22 deep / M20-36 deep, evenly distributed

Lubricating ports

1 conical grease nipple on housing exterior, right side

3 conical grease nipples on housing exterior, left side

Slew drive supplied pre-lubricated

Drawing number WD-H 0645/3-00014

Drawing number WD-H 0645/3-00020

Module	m	[mm]	7	8
Number of threads of the worm		[-]	2	1
Gear ratio	i	[-]	51	90
Self-locking gears			No**	No**
Max. torque $S_T = 1$	M_{d max}	[Nm]	63220	76310
Nom. torque $S_W = 1$ at $n = 1 \text{ min}^{-1}$	M_{d nom}	[Nm]	63220	76310
Max. holding torque* $S_{FS} = 1$ (static)	M_{h max}	[Nm]	63220	76310
Static load rating, radial	C_{o rad}	[kN]	3528	3528
Static load rating, axial	C_{o ax}	[kN]	7199	7199
Dynamic load rating, radial	C_{rad}	[kN]	570	570
Dynamic load rating, axial	C_{ax}	[kN]	803	803
Weight, incl. 25 kg for hydraulic motor DT930		[kg]	430	430

* Optionally with brake

** See: Technical Information, section *Self-locking*

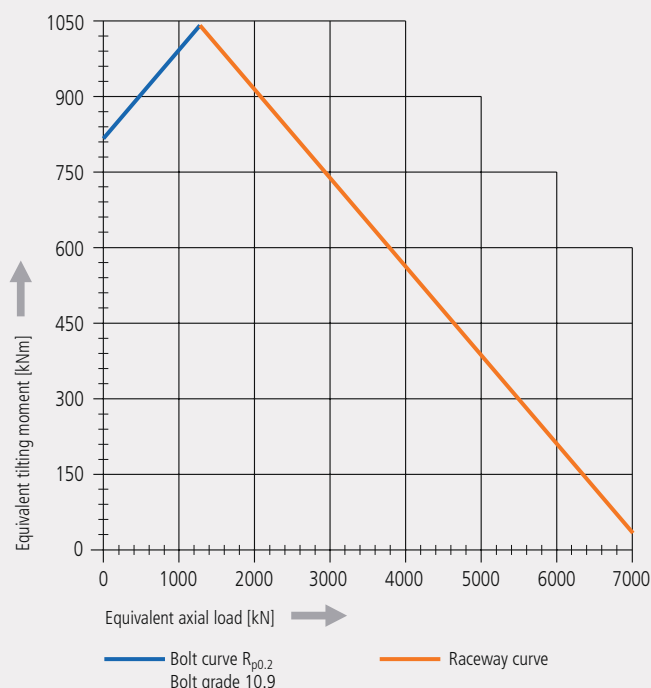
The hydraulic/electric motor is selected according to the actual requirements and customer specification.

Selection example:

Performance data with hydraulic motor DT930

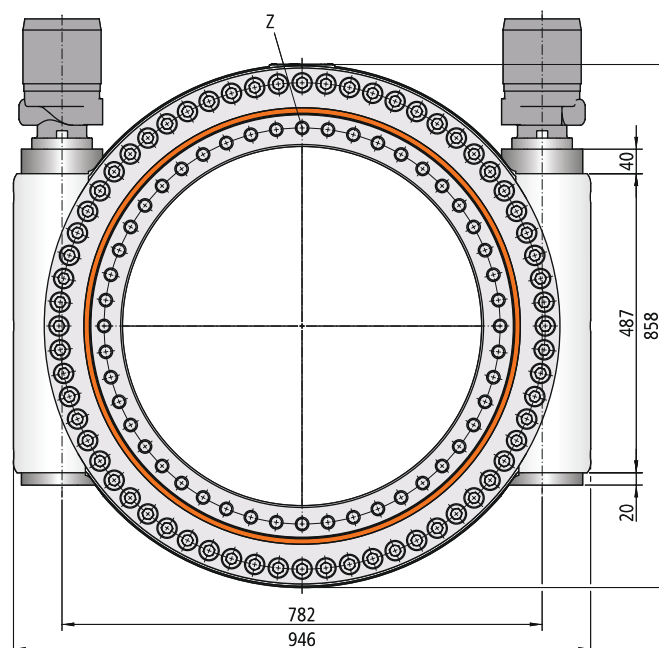
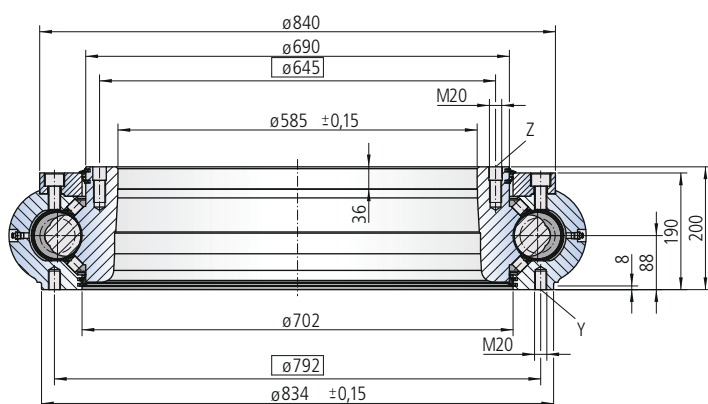
Pressure differential	Δp	[bar]	160	150
Oil flow	Q	[l/min]	63	95
Output speed	n	[min ⁻¹]	1	1
Max. achievable torque	M_d	[Nm]	63220	76310

Limiting load diagram for compressive loads



Please always observe the technical information!

Size WD-H 0645 / 2 drives



Mounting holes

Y = 48 drill holes M20-30 deep, evenly distributed

Z = 48 drill holes $\phi 22-22$ deep / M20-36 deep, evenly distributed

Lubricating ports

1 conical grease nipple on both left and right side of housing exterior

Slew drive supplied pre-lubricated

Drawing number WD-H 0645/3-00001

Drawing number WD-H 0645/3-00021

Module	m	[mm]	7	8
Number of threads of the worm		[-]	2	1
Gear ratio	i	[-]	51	90
Self-locking gears			No**	No**
Max. torque $S_T = 1$	$M_{d \max}$	[Nm]	126440	152610
Nom. torque $S_W = 1$ at $n = 1 \text{ min}^{-1}$	$M_{d \text{ nom}}$	[Nm]	126440	152610
Max. holding torque* $S_{FS} = 1$ (static)	$M_{h \max}$	[Nm]	126440	152610
Static load rating, radial	$C_{o \text{ rad}}$	[kN]	3528	3528
Static load rating, axial	$C_{o \text{ ax}}$	[kN]	7199	7199
Dynamic load rating, radial	C_{rad}	[kN]	570	570
Dynamic load rating, axial	C_{ax}	[kN]	803	803
Weight, incl. 50 kg for 2 hydraulic motors DT930		[kg]	516	516

* Optionally with brake

** See: Technical Information, section *Self-locking*

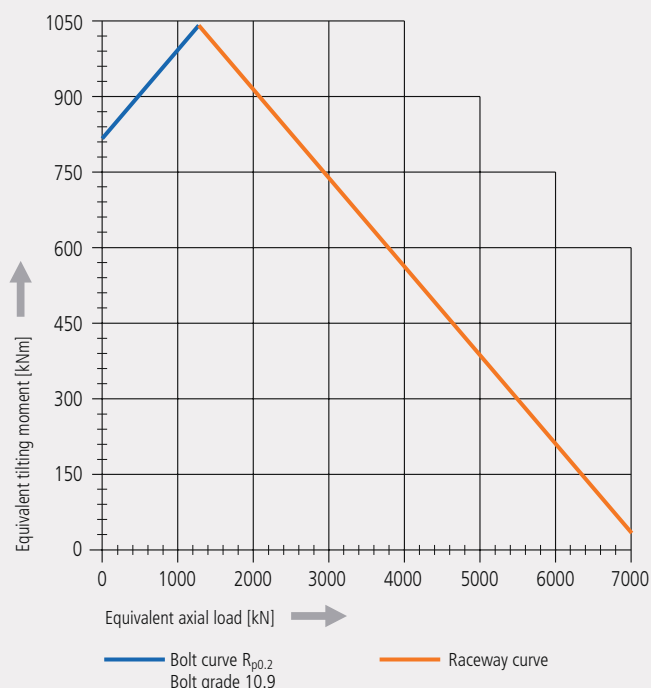
The hydraulic/electric motor is selected according to the actual requirements and customer specification.

Selection example:

Performance data with two hydraulic motors DT930

Pressure differential	Δp	[bar]	160	150
Oil flow	Q	[l/min]	126	190
Output speed	n	[min ⁻¹]	1	1
Max. achievable torque	M_d	[Nm]	126440	152610

Limiting load diagram for compressive loads



Please always observe the technical information!